

# Soap dispenser Ø85, 350 ml with indicator

LIQUID SOAP, LOTION AND DISINFECTANT

**d line**  
KNUD HOLSCHER DESIGN

## PRODUCT DATA SHEET

June 2016

### ITEM NUMBER

14.7045.02.011

16.7045.01.011

### SURFACE

Satin Stainless Steel

Polished Stainless Steel

### PRODUCT

Liquid Soap, Lotion & Disinfection dispenser Ø85, 350 ml with Indicator

### PICTURE



### TENDER TEXT

Soap dispenser with indicator and reservoir, 350 ml

Outstanding classic danish design by Knud Holscher

Concealed fixing

Material: 1,5 mm stainless steel AISI 316

Satin grain 320 or mirror polished stainless steel, crafted by hand

Soap, Lotion or Disinfectant

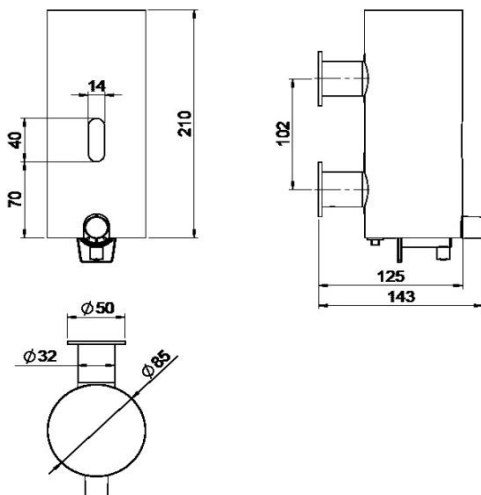
Classic black button included

Alternative: Blue, Green or Purple buttons with text included

Dimensions: W85 x H210 x D125 mm

Locking mechanism with d line key

### DRAWING



### PRODUCT SPECIFICATION

Dimensions: W85 x H210 x D125 mm

Material: 1,5 mm AISI 316

Surface: satin grain 320 or mirror polished, crafted by hand

Chemical: liquid soap, lotion or disinfectant ①

Capacity: 350 ml

Buttons: Blue, Green or Purple w text or Black w/o text

Text: Soap(Green), Lotion (Purple), Disinfect (Blue) -text can be moved

d line key included

Ø6 x 70 mm screws and Ø10 x 40 mm plugs included

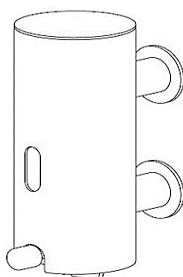
210 mm space above is required in order to remove the cover for refill

Key opening rotation: MIN. 5 degrees and MAX. 30 degrees

#### ① Important:

The compatibility of filling material and dispenser system must be checked prior to the use of new filling materials, in order to be able to guarantee fault-free functionality. d line assumes no liability for any damages or costs which arise due to the incompatibility of filling material and dispenser systems.

### ISO-DRAWING



### CERTIFICATES & AWARDS



reddot

### PRODUCT CARE

d line products are produced in the highest quality stainless steel, marine grade, AISI 316. To sustain the unique d line surface appearance please follow the below instructions:

- Wash down the surfaces using soapy water or mild detergent
- Always thoroughly rinse off with clean water
- To complete the cleaning procedure dry/polish the surfaces with a soft dry cloth

Please do not use scouring powder, steel wool, chloride based detergents or other aggressive cleaning products as these may damage the surface.

If spots or corrosion appear on the surface it is not due to the stainless steel quality, but to impurities in the environment, aggressive conditions or improper or insufficient cleaning.