



CorePro LED tube Universal T8



CorePro LEDtube UN 600mm HO 8W840 T8

The new Philips CorePro LEDtube Universal T8 brings simplicity to your lighting project. You don't need to pay attention to the driver technology anymore. Thanks to a unique design, Philips CorePro LEDtube Universal T8 directly fits in luminaires operating either on Electro Magnetic ballasts or HF Electronic ballasts or mains power connection. So simple to operate and no need to carry double stock of products! Perfectly safe, reliable & easy to install Philips CorePro LEDtube Universal T8 is the ideal alternative to standard fluorescent tubes to save energy and lower investment.

Product data

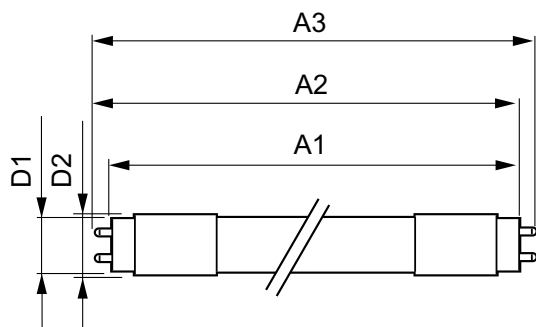
General information		Color Rendering Index (Nom)		80	
Cap-Base	G13 [Medium Bi-Pin Fluorescent]	LLMF At End Of Nominal Lifetime (Nom)		70 %	
CE mark	Yes	Operating and electrical			
EU RoHS compliant	Yes	Input Frequency	50 to 60 Hz		
Nominal Lifetime (Nom)	30000 h	Power (Nom)	8 W		
Switching Cycle	50000	Lamp Current (Nom)	40 mA		
Flux measurement reference	Sphere	Starting Time (Nom)	0.5 s		
Tier	CorePro	Warm Up Time to 60% Light (Nom)	0.5 s		
Light technical		Power Factor (Nom)	0.9		
Color Code	840 [CCT of 4000K]	Voltage (Nom)	220-240 V		
Beam Angle (Nom)	240 °	Temperature			
Luminous Flux (Nom)	900 lm	T-Ambient (Max)	45 °C		
Color Designation	Cool White (CW)	T-Ambient (Min)	-20 °C		
Correlated Color Temperature (Nom)	4000 K	T-Storage (Max)	65 °C		
Luminous Efficacy (rated) (Nom)	112 lm/W	T-Storage (Min)	-40 °C		
Color Consistency	<6				

CorePro LED tube Universal T8

T-Case Maximum (Nom)	45 °C
Controls and dimming	
Dimmable	No
Mechanical and housing	
Bulb Finish	Frosted
Bulb Material	Glass
Product Length	600 mm
Bulb Shape	Tube, double-ended
Approval and application	
Energy Efficiency Class	E
Energy Saving Product	Yes
Approval Marks	RoHS compliance TUV CE marking KEMA Keur certificate

Energy Consumption kWh/1000 h	8 kWh
EPREL Registration Number	403635
Product data	
Full product code	871869978279500
Order product name	CorePro LEDtube UN 600mm HO 8W840 T8
EAN/UPC - Product	8718699782795
Order code	929002419902
Numerator - Quantity Per Pack	1
Numerator - Packs per outer box	10
Material Nr. (12NC)	929002419902
Net Weight (Piece)	0.110 kg

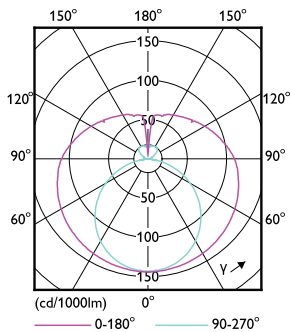
Dimensional drawing



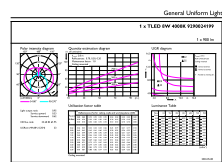
CorePro LEDtube UN 600mm HO 8W840 T8

Product	D1	D2	A1	A2	A3
CorePro LEDtube UN 600mm HO 8W840 T8	25.7 mm	28 mm	588.6 mm	595.7 mm	602.8 mm

Photometric data



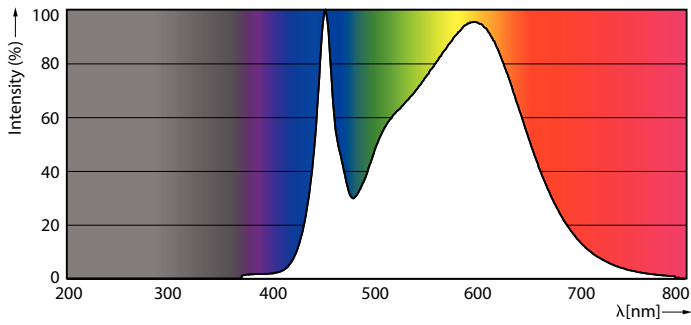
Light Distribution Diagram



General uniform lighting

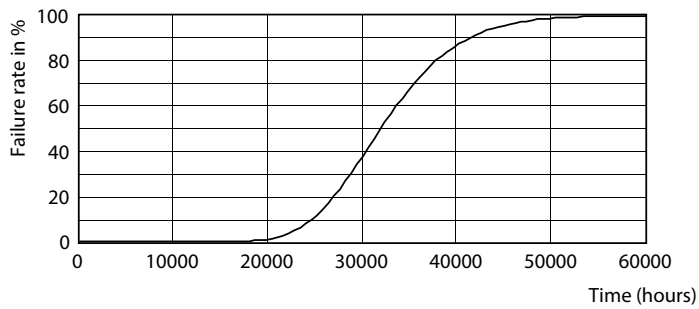
CorePro LED tube Universal T8

Photometric data

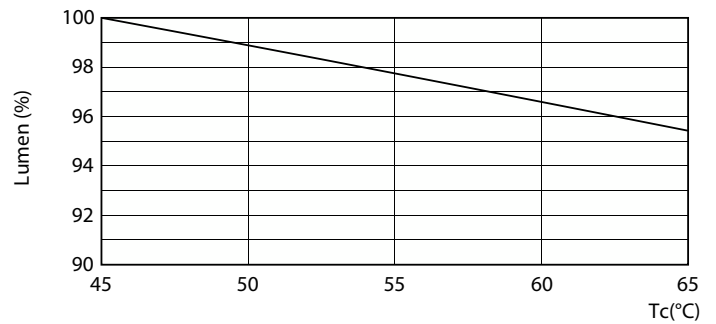


Spectral Power Distribution Colour

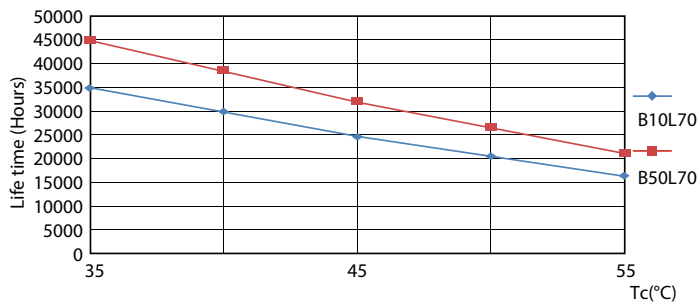
Lifetime



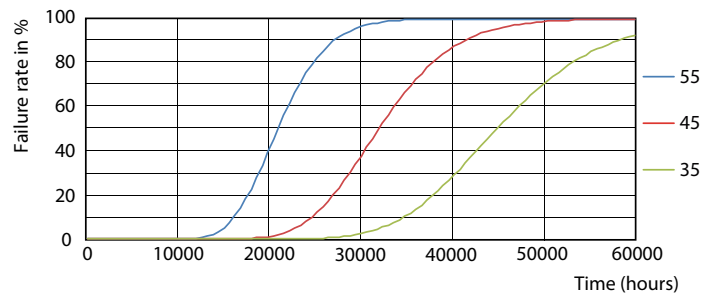
Life Expectancy Diagram



LumenVsTc



LEDtube COR SLR 8W 30K LifetimeVsTc-LED-LED



LEDtube COR SLR 8W 30K FailureRate-LED-LED

CorePro LED tube Universal T8

Lifetime



Lumen Maintenance Diagram

